

Fat City  
**NODA**

**3123 NORTH DAVIDSON STREET  
CHARLOTTE, NC | 28205**

**AVAILABLE FOR LEASE**



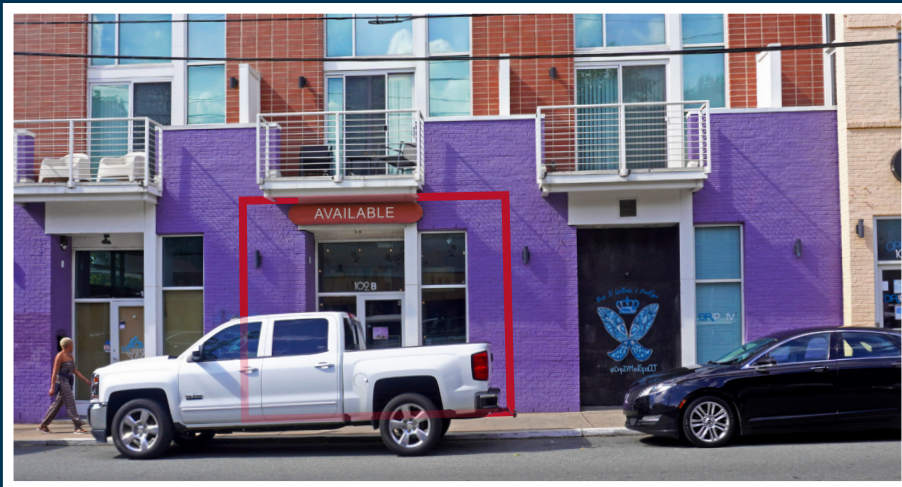
**THE  
PROVIDENCE GROUP**  
EXCELLENCE IN RETAIL REAL ESTATE

# Fat City NoDa

NoDa, short for North Davidson, is one of Charlotte's most vibrant and growing neighborhoods. Located just northeast of Uptown Charlotte, NoDa is known for its artsy and diverse atmosphere attracting restaurants, bars, local boutiques, and art galleries. The expansion of the Blue Line Light Rail has made the neighborhood even more accessible and spurred both residential and commercial growth.



NoDa offers a blend of historic charm with modern developments, making it one of the most desirable neighborhoods in the city. Commercial spaces, particularly those catering to retail and dining, are in high demand.



# The NoDa Neighborhood



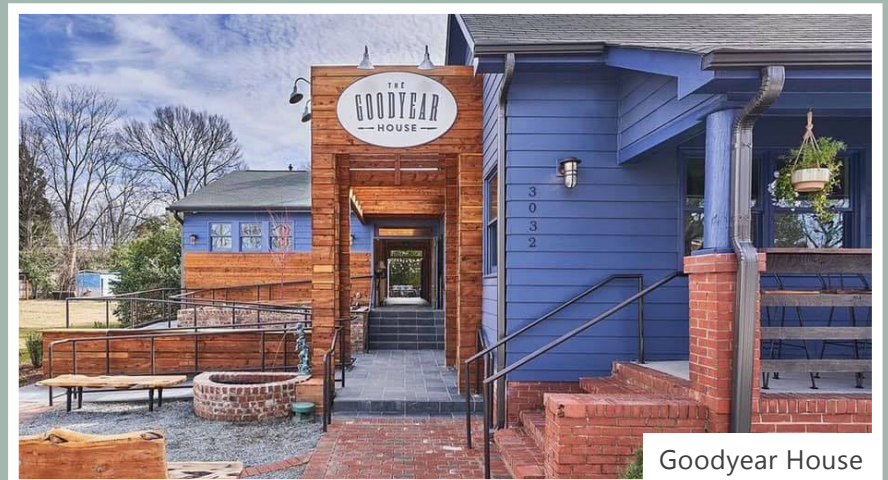
Ever Andalo



Neighborhood Theatre



Haberdish

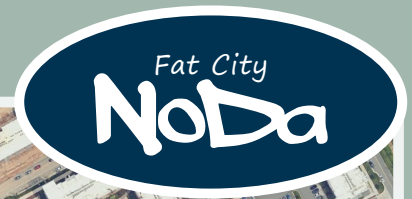


Goodyear House

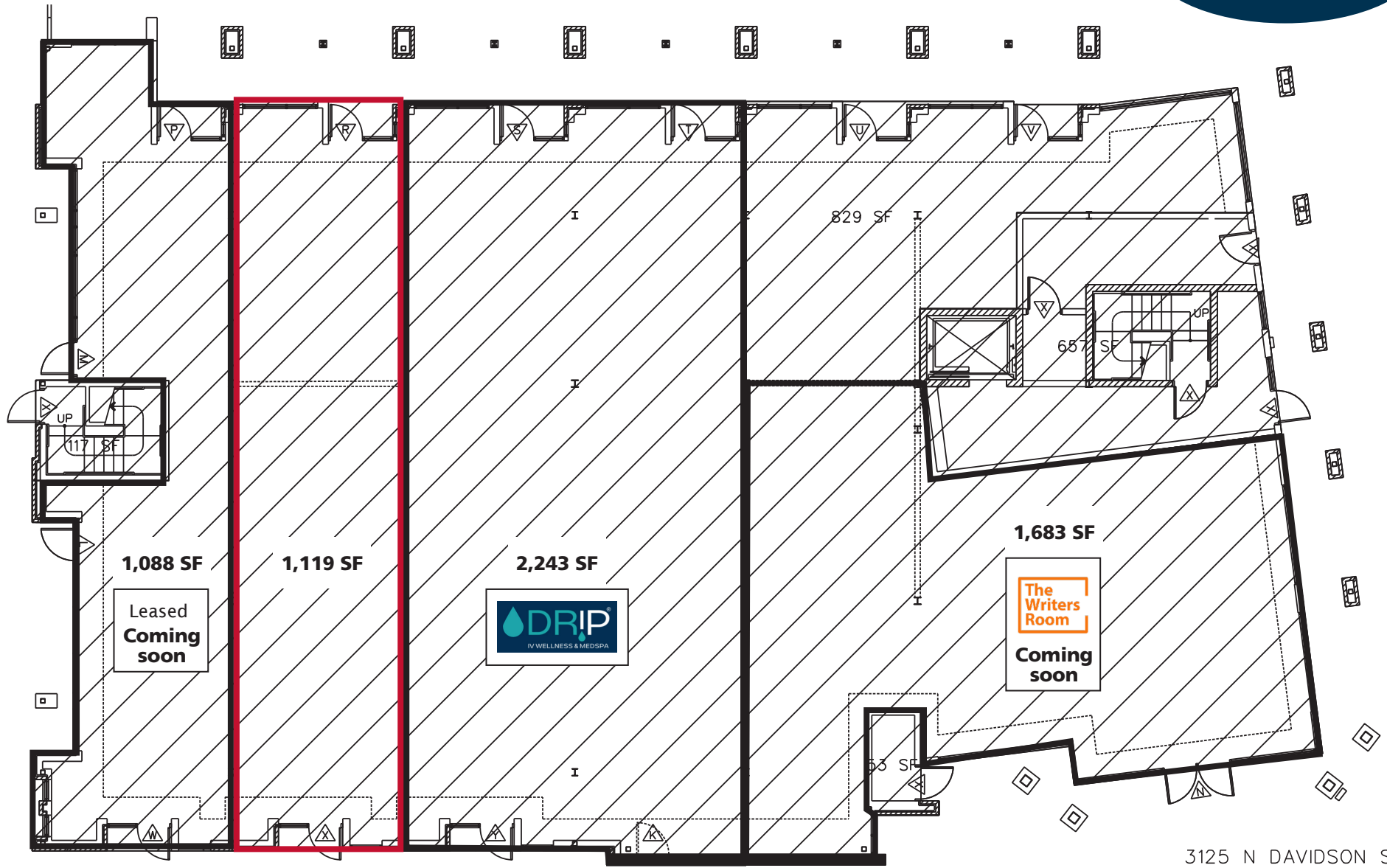
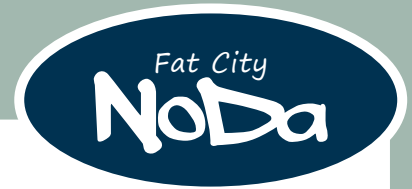
# CLOSE AERIAL



# MID AERIAL

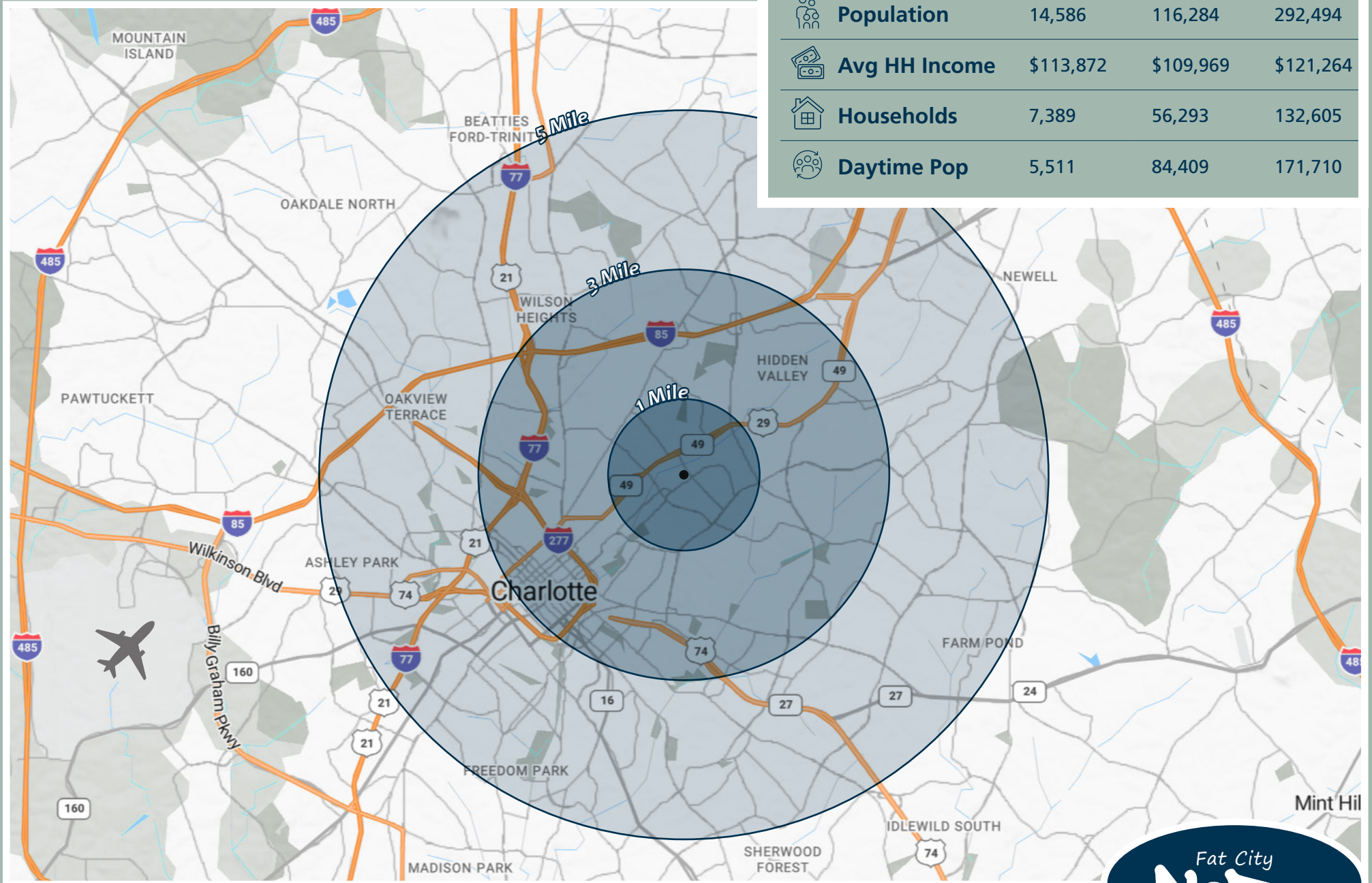


# SITE PLAN



3125 N DAVIDSON ST  
7,789 SF

# DEMOGRAPHICS



	2024	1 Mile	3 Miles	5 Miles
Population		14,586	116,284	292,494
Avg HH Income		\$113,872	\$109,969	\$121,264
Households		7,389	56,293	132,605
Daytime Pop		5,511	84,409	171,710





Fat City  
**NoDa**



**THE PROVIDENCE GROUP**  
EXCELLENCE IN RETAIL REAL ESTATE

© 2024 The Providence Group. All rights reserved. The information above has been obtained by sources deemed reliable. While we do not doubt its accuracy, we have not verified it and make no guarantee, warranty, or representation of it. It is your responsibility to independently confirm its accuracy and completeness. You and your advisors should conduct a careful, independent investigation of the property to determine to your satisfaction the suitability of the property for your needs.

*Contact Us*

**Lauren Faulkenberry**

**704.315.6594**

[lfaulkenberry@providencegroup.com](mailto:lfaulkenberry@providencegroup.com)