



Dedicated Pylon Sign  
Visible from I-85

EXIT 76

79,500 VPD



**OUTBACK**  
STEAKHOUSE®

**Firestone**

O'Charley's

81,500 VPD



**Holiday Inn**  
EXPRESS®

**ROCKER BARREL**  
Old Country Store

**COURTYARD**  
Marriott



**DUNKIN'**  
DONUTS®

**Bojangles**  
Famous Chicken 'n Biscuits

34,500 VPD

E Innes Street

**STARBUCK**  
COFFEE®

**Jersey Mike's**  
SUBS

**NOTHING BUTT**  
CAKES

**Chick-fil-A**

N Arlington Street

# FULL SERVICE RESTAURANT FOR LEASE

123 N ARLINGTON ST, SALISBURY, NC 28144



**CLICK FOR VIDEO**

# FULL SERVICE RESTAURANT FOR LEASE

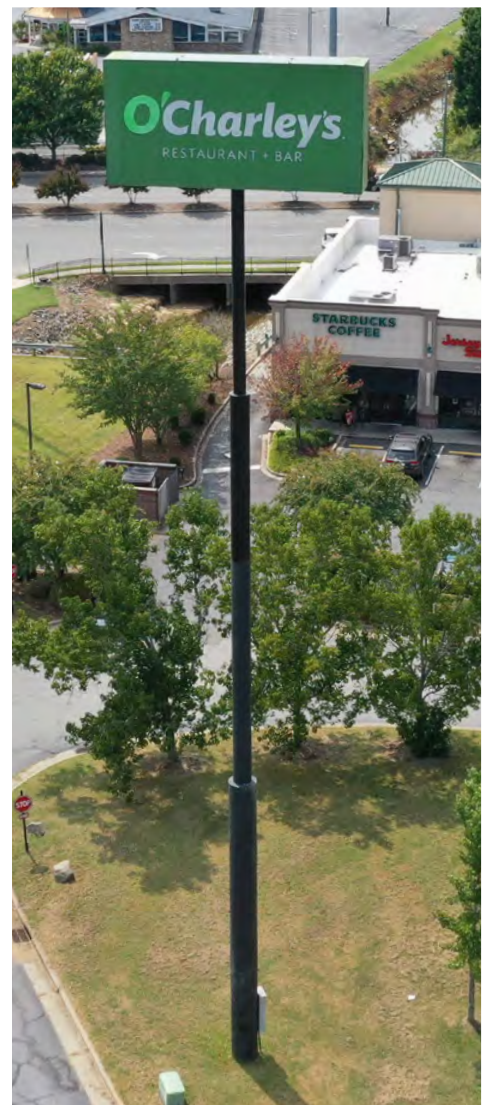
123 N ARLINGTON ST,  
SALISBURY, NC 28144

## PROPERTY OVERVIEW

Recently closed, fully equipped, O'Charley's restaurant building available for lease next to Chick-Fil-A and Outback at the heart of Salisbury's primary highway retail node at I-85 exit 76; E Innes St.

## PROPERTY HIGHLIGHTS

- 7,466 square foot restaurant with 110 exclusive parking spaces
- Fully equipped, move-in ready
- 150 yards fom I-85 Exit 76
- Dedicated Interstate Pole sign visible from I-85
- Monument signage on E Innes St
- Next to Chick-Fil-A
- 34,500 VPD on E Innes Street - 81,500 VPD on 
- Nearby Businesses:



Dedicated Interstate Pole sign visible from I-85

## CONTACT

Darrell Palasciano | 704.644.4587  
dpalasciano@providencegroup.com

DEMOGRAPHICS (2024)	1 MILE	3 MILE	5 MILE
POPULATION	6,281	33,441	56,851
AVERAGE HH INCOME	\$64,040	\$84,872	\$88,267
DAYTIME EMPLOYMENT	6,332	20,922	27,320

© 2024 The Providence Group. All rights reserved. The information above has been obtained by sources deemed reliable. While we do not doubt its accuracy, we have not verified it and make no guarantee, warranty, or representation of it. It is your responsibility to independently confirm its accuracy and completeness. You and your advisors should conduct a careful, independent investigation of the property to determine to your satisfaction the suitability of the property for your needs.



**SITE**

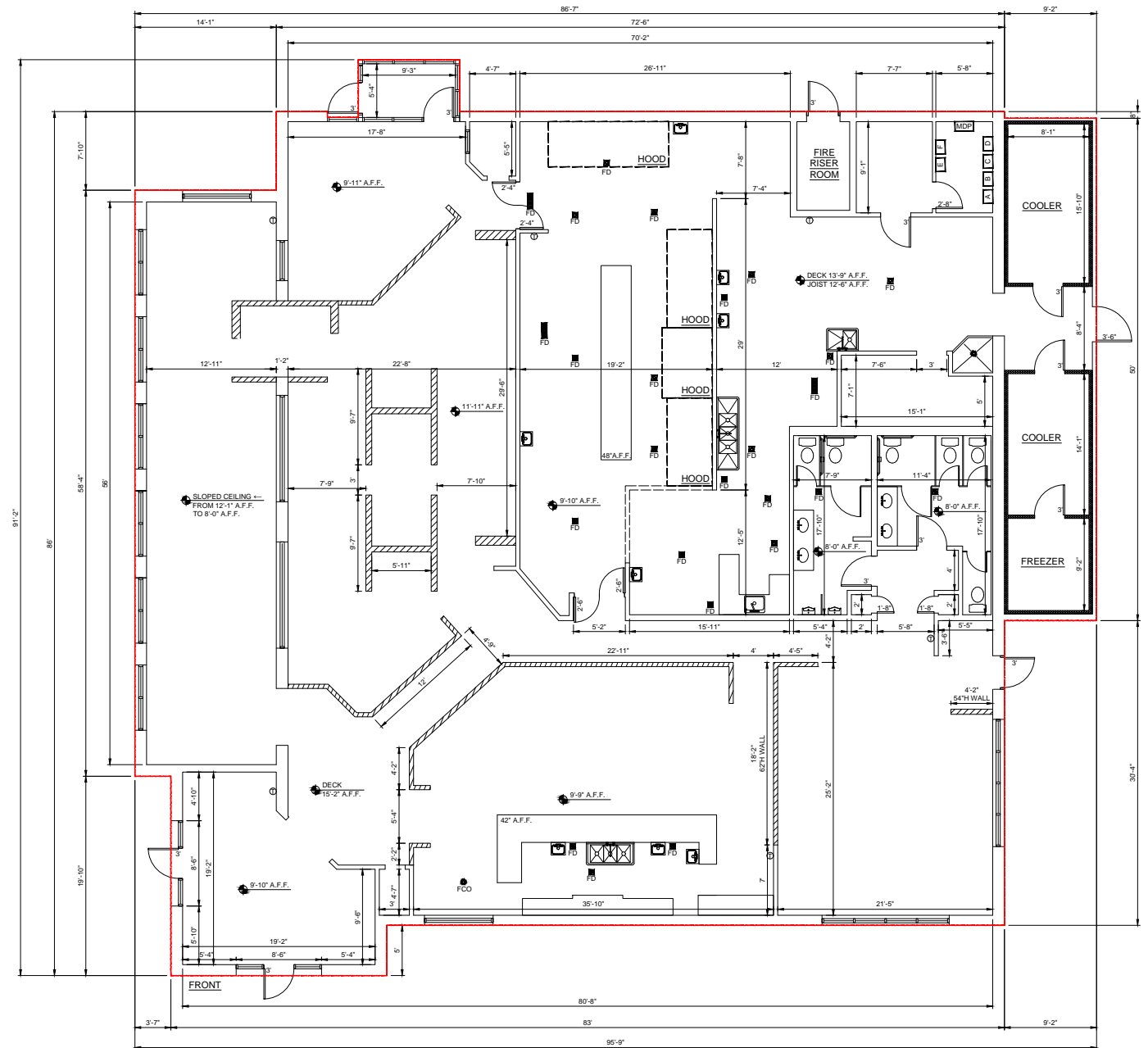
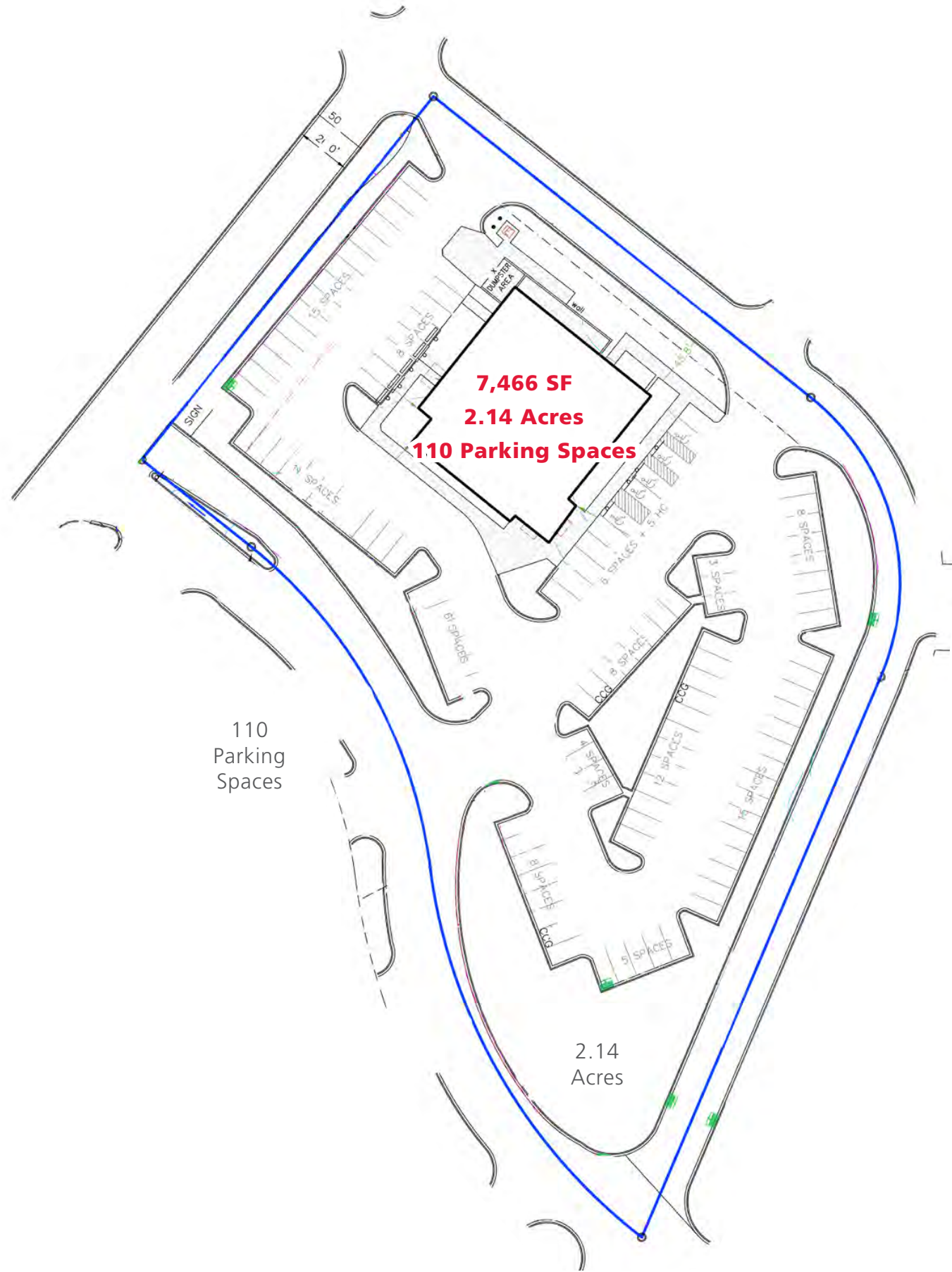
34,500 VPD

E Innes Street

N Arlington Street

**CONTACT**

Darrell Palasciano | 704.644.4587  
 dpalasciano@providencegroup.com



**CONTACT**

Darrell Palasciano | 704.644.4587  
dpalasciano@providencegroup.com



**CONTACT**

Darrell Palasciano | 704.644.4587  
dpalasciano@providencegroup.com





**CONTACT**

Darrell Palasciano | 704.644.4587  
 dpalasciano@providencegroup.com



  
**CLICK FOR VIDEO**

**CONTACT**

Darrell Palasciano | 704.644.4587  
 dpalasciano@providencegroup.com