

# CRESCENT PLACE SHOPPING CENTER

1390 HWY 16 S, NEWTON, NC



2,400 SF

8,050 SF

FOOD LION

**CONTACT**

Spencer Brown | 704.644.4582  
sbrown@providencegroup.com

Eric Howell | 704.644.4584  
ehowell@providencegroup.com

# CRESCENT PLACE SHOPPING CENTER

1390 HWY 16 S, NEWTON, NC

## PROPERTY / LEASING INFO

GLA: 45,230 SF

Available: 8,050 SF & 2,400 SF

Rate: Please call

TICAM: \$2.05 PSF

## PROPERTY HIGHLIGHTS

Crescent Place Shopping Center is a Food Lion anchored neighborhood center located at the intersection of Hwy 16 and Hwy 10 in Newton, NC. Crescent Place is a convenient shopping destination for residents in south east Newton, and to employees of nearby manufacturing and technology companies such as Corning Optical, Lee Industries, ZF Chassis Systems, and Snider Fleet Solutions, among others.

DEMOGRAPHICS (2024)	1 MILE	3 MILE	5 MILE
POPULATION	3,157	18,219	35,671
AVERAGE HH INCOME	\$63,118	\$79,322	\$90,083
MEDIAN HH INCOME	\$57,537	\$60,562	\$63,608
BUSINESS ESTABLISHMENTS	127	732	1,417
DAYTIME EMPLOYMENT	2,324	9,446	20,301



300 West Summit Ave | Suite 250 | Charlotte, North Carolina 28203  
www.PROVIDENCEGROUP.COM



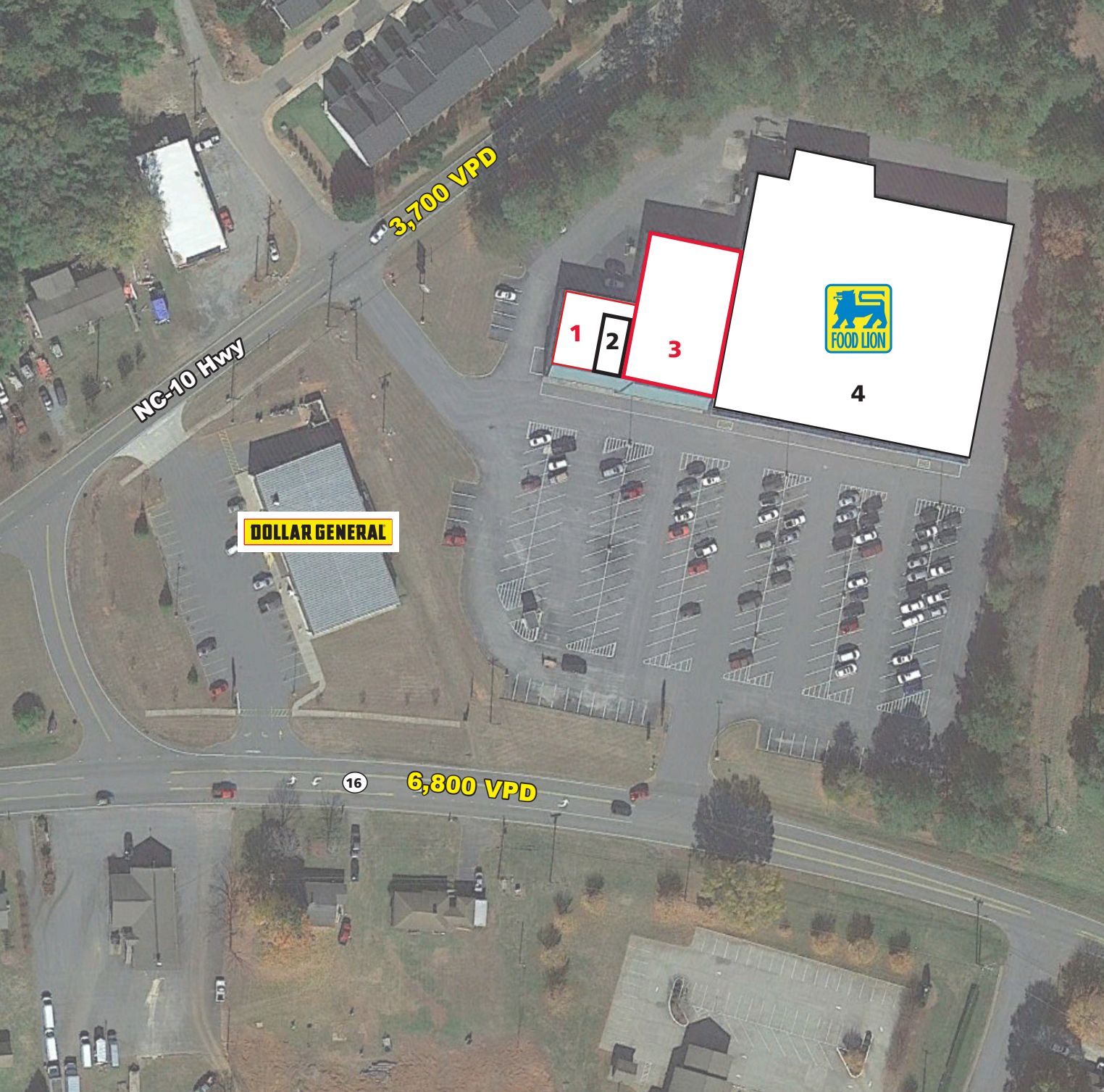
## CONTACT

Eric Howell | 704.644.4584  
ehowell@providencegroup.com

Spencer Brown | 704.644.4582  
sbrown@providencegroup.com

© 2025 The Providence Group. All rights reserved. The information above has been obtained by sources deemed reliable. While we do not doubt its accuracy, we have not verified it and make no guarantee, warranty, or representation of it. It is your responsibility to independently confirm its accuracy and completeness. You and your advisors should conduct a careful, independent investigation of the property to determine to your satisfaction the suitability of the property for your needs.



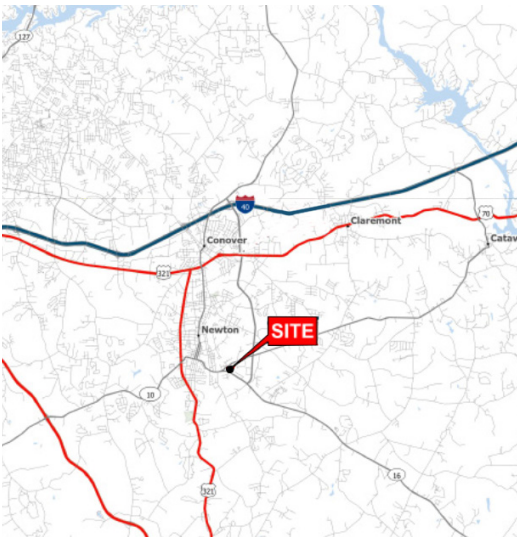


# CRESCENT PLACE SHOPPING CENTER

1390 HWY 16 S, NEWTON, NC



Suite	Space	Tenant	Square Feet
1366	1	AVAILABLE	2,400 SF
1378	2	Z's Tobacco	900 SF
1384	3	AVAILABLE	8,050 SF
1390	4	Food Lion	33,880 SF



## CONTACT

Eric Howell | 704.644.4584  
ehowell@providencegroup.com

Spencer Brown | 704.644.4582  
sbrown@providencegroup.com

300 West Summit Ave | Suite 250 | Charlotte, North Carolina 28203

WWW.PROVIDENCEGROUP.COM





**AFFORDABLE  
MINI STORAGE**

**AVAILABLE  
2,400 SF**

**AVAILABLE  
8,050 SF**

**DOLLAR GENERAL**



**NC-10 Hwy 3,700 VPD**

**6,800 VPD**

**12,000 VPD**

**1880**

**SM FURNITURE**

Hilltop Sports Club

Kingdom Hall of Jehovah's Witnesses

Eastmont Dr

Charlotte Hwy

**FULL ACCESS**

© 2025 The Providence Group. All rights reserved. The information above has been obtained by sources deemed reliable. While we do not doubt its accuracy, we have not verified it and make no guarantee, warranty, or representation of it. It is your responsibility to independently confirm its accuracy and completeness. You and your advisors should conduct a careful, independent investigation of the property to determine to your satisfaction the suitability of the property for your needs.

**CONTACT**

Spencer Brown | 704.644.4582  
sbrown@providencegroup.com

Eric Howell | 704.644.4584  
ehowell@providencegroup.com



300 West Summit Ave | Suite 250 | Charlotte, North Carolina 28203  
WWW.PROVIDENCEGROUP.COM

