

# NORLEX SHOPPING CENTER

816 WINSTON ROAD LEXINGTON, NC 27295



## CONTACT

Eric Howell | 704.644.4584  
ehowell@providencegroup.com

Spencer Brown | 704.644.4582  
sbrown@providencegroup.com



300 West Summit Ave | Suite 250 | Charlotte, North Carolina 28203

WWW.PROVIDENCEGROUP.COM

AVAILABLE  
FOR LEASE

PROUD PARTNER  
**XTEAM**  
RETAIL ADVISORS

# NORLEX SHOPPING CENTER

816 WINSTON ROAD LEXINGTON, NC 27295

## PROPERTY / LEASING INFO

GLA: \_\_\_\_\_ 106,549 SF  
 Shop Space Available: \_\_\_\_\_ 2,128 – 7,000 SF  
 Jr Anchor Space Available: \_\_\_\_\_ 29,652 SF  
 Rate: \_\_\_\_\_ Please call  
 Outparcel Available: \_\_\_\_\_ +/- 1.45 Acres (GL or BTS only)

## PROPERTY HIGHLIGHTS

29,652 SF Jr anchor space available  
 Convenient location just off I-85 Business  
 Signalized access on Winston Rd  
 Excellent visibility from heavily traveled I-85 Business  
 Outparcel opportunity  
 Pylon space available

## DEMOGRAPHICS (2024)

	1 MILE	3 MILE	5 MILE
POPULATION	6,018	24,406	40,663
AVERAGE HH INCOME	\$56,999	\$63,540	\$74,283
MEDIAN HH INCOME	\$41,145	\$46,651	\$56,260
BUSINESS ESTABLISHMENTS	371	1,119	1,553
DAYTIME EMPLOYMENT	3,066	9,736	14,387



## CONTACT

Eric Howell | 704.644.4584  
 ehowell@providencegroup.com

Spencer Brown | 704.644.4582  
 sbrown@providencegroup.com

© 2024 The Providence Group. All rights reserved. The information above has been obtained by sources deemed reliable. While we do not doubt its accuracy, we have not verified it and make no guarantee, warranty, or representation of it. It is your responsibility to independently confirm its accuracy and completeness. You and your advisors should conduct a careful, independent investigation of the property to determine to your satisfaction the suitability of the property for your needs.

# NORLEX SHOPPING CENTER

816 WINSTON ROAD LEXINGTON, NC 27295



## CONTACT

Eric Howell | 704.644.4584  
ehowell@providencegroup.com

Spencer Brown | 704.644.4582  
sbrown@providencegroup.com

Suite	Tenant	Square Feet
01	Aarons	8,550 SF
02	<b>Available</b>	<b>2,128 SF</b>
03	Nana Nail Salon & Spa	2,128 SF
04	Time Square Pizza	2,300 SF
05	Lexington Tobacco	2,107 SF
06	Pawn Way	12,848 SF
07	<b>Available</b>	<b>29,652 SF</b>
08	Food Lion	39,836 SF
09	<b>Available</b>	<b>7,000 SF</b>

Suite	Tenant	Square Feet
10	McDonalds	<i>Owned by Others</i>
11	Taco Bell	<i>Owned by Others</i>
12	<b>Available</b>	<b>1.45 AC</b>

© 2024 The Providence Group. All rights reserved. The information above has been obtained by sources deemed reliable. While we do not doubt its accuracy, we have not verified it and make no guarantee, warranty, or representation of it. It is your responsibility to independently confirm its accuracy and completeness. You and your advisors should conduct a careful, independent investigation of the property to determine to your satisfaction the suitability of the property for your needs.

300 West Summit Ave | Suite 250 | Charlotte, North Carolina 28203  
www.PROVIDENCEGROUP.COM





Hayes JEWELERS  
"KING OF DIAMONDS"®



Parkdale Mills

**29,652 SF AVAILABLE**

**Outparcel**

**CONTACT**

Eric Howell | 704.644.4584  
ehowell@providencegroup.com

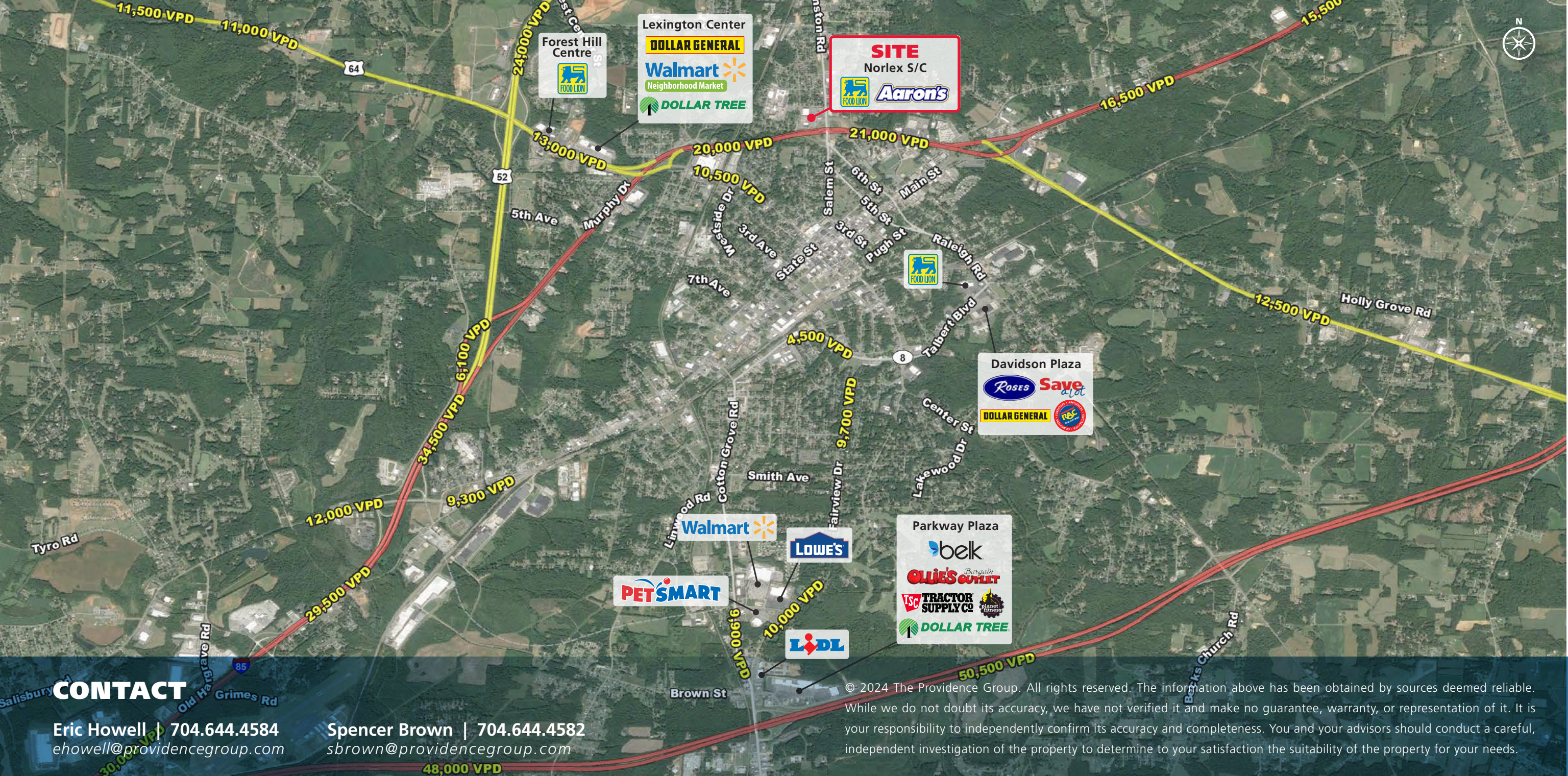
Spencer Brown | 704.644.4582  
sbrown@providencegroup.com

© 2024 The Providence Group. All rights reserved. The information above has been obtained by sources deemed reliable. While we do not doubt its accuracy, we have not verified it and make no guarantee, warranty, or representation of it. It is your responsibility to independently confirm its accuracy and completeness. You and your advisors should conduct a careful independent investigation of the property to determine to your satisfaction the suitability of the property for your needs.



300 West Summit Ave | Suite 250 | Charlotte, North Carolina 28203  
WWW.PROVIDENCEGROUP.COM





**CONTACT**

**Eric Howell** | 704.644.4584  
ehowell@providencegroup.com

**Spencer Brown** | 704.644.4582  
sbrown@providencegroup.com

© 2024 The Providence Group. All rights reserved. The information above has been obtained by sources deemed reliable. While we do not doubt its accuracy, we have not verified it and make no guarantee, warranty, or representation of it. It is your responsibility to independently confirm its accuracy and completeness. You and your advisors should conduct a careful, independent investigation of the property to determine to your satisfaction the suitability of the property for your needs.